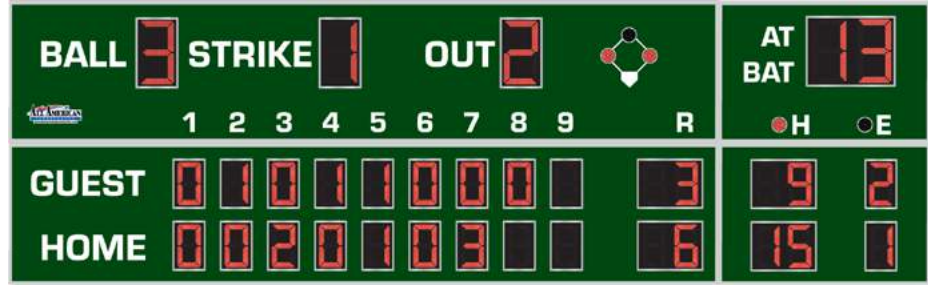


OUTDOOR SCOREBOARD
8333LS

Baseball 10-Inning Line Score



OVERALL DIMENSION

8' high x 26' wide x 4.7" deep (including built-in mounting channel).

INFORMATION DISPLAYED

Home and Guest Score, Ball, Strike, Out, Innings, On Base Indicators, At Bat, Hit/Error Indicators, Hits, Errors.
Information may vary depending on variations.

DIGITS

21", 14" Bright Red, 7-Segment LEDs.

INDICATORS

4" Bright Red LEDs, Bull's eye configuration.

CAPTIONS

White vinyl letters. LED Team Names available (see below).

HORN

Horn not included. External 100 dB Vibrating Horn or 120dB Trumpet Horn are available.

CONSTRUCTION

Extruded aluminum frame, .093" thick, mill finish. Faces made from 22ga galvalume steel with shatter proof polycarbonate windows. Backs made from 22ga galvanized steel.

STANDARD COLORS
(Custom Colors Available)



Black, Navy, Blue, Light Blue, and Red have a Kynar® finish, other standard and custom colors are powder coated or painted enamel.

ELECTRONICS

100% solid state, microprocessor controlled system.

SERVICING

Front access for ease of servicing. Plug in modules for ease of replacement.

MICROPROCESSOR CONTROL CONSOLE



Sold separately. Extruded Aluminum, high impact low profile microprocessor control console, latest state of the art, user friendly. Size: 13.25" wide x 5" high x 9" deep. Weight: 6 lbs. Microprocessor to be supplied with 25 feet of cable (hardwire). Microprocessor control console with membrane keyboard provides for direct entry of all information. Radio Control is available.

JUNCTION BOX

One outdoor rated junction box, 5" x 3" with cover and ethernet cable. (Hardwire)

DATA CABLE

Twisted pair, direct burial, RJ45 Connectors (Hardwire).

POWER REQUIREMENTS

115/230 VAC. 50/60 Hz. Minimum one 20A circuit is recommended.

INSTALLATION

All standard variations typically installed on three posts. Mounting kits are supplied with scoreboard.
NOTE: Number of posts must be determined locally by licenced engineer.

WEIGHT

Net 890 lbs / Shipping 1300 lbs.

WARRANTY

Five year guarantee against defects in materials and workmanship. Factory repair service for parts in warranty. Union label. UL Certified.

STANDARD VARIATIONS - Add suffix to model number in order that they appear below (see examples on next page)

Model + L

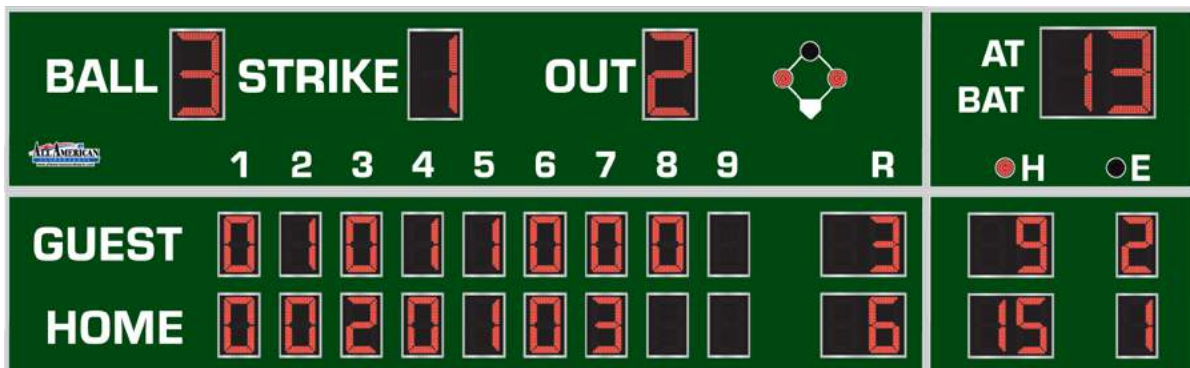
Designated logo area in place of the On Base Indicators.

Model + RV2

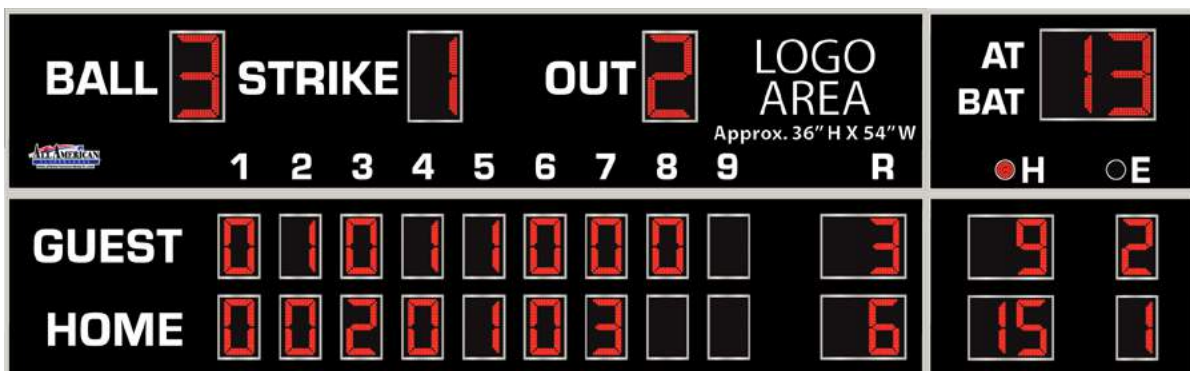
Radio upgrade. 2.4 GHz spread spectrum, 1500' expected range.

EXAMPLES OF VARIATIONS

This page shows samples of boards within the 8333LS family. Boards that fall outside of these options will be considered custom and will require additional engineering.



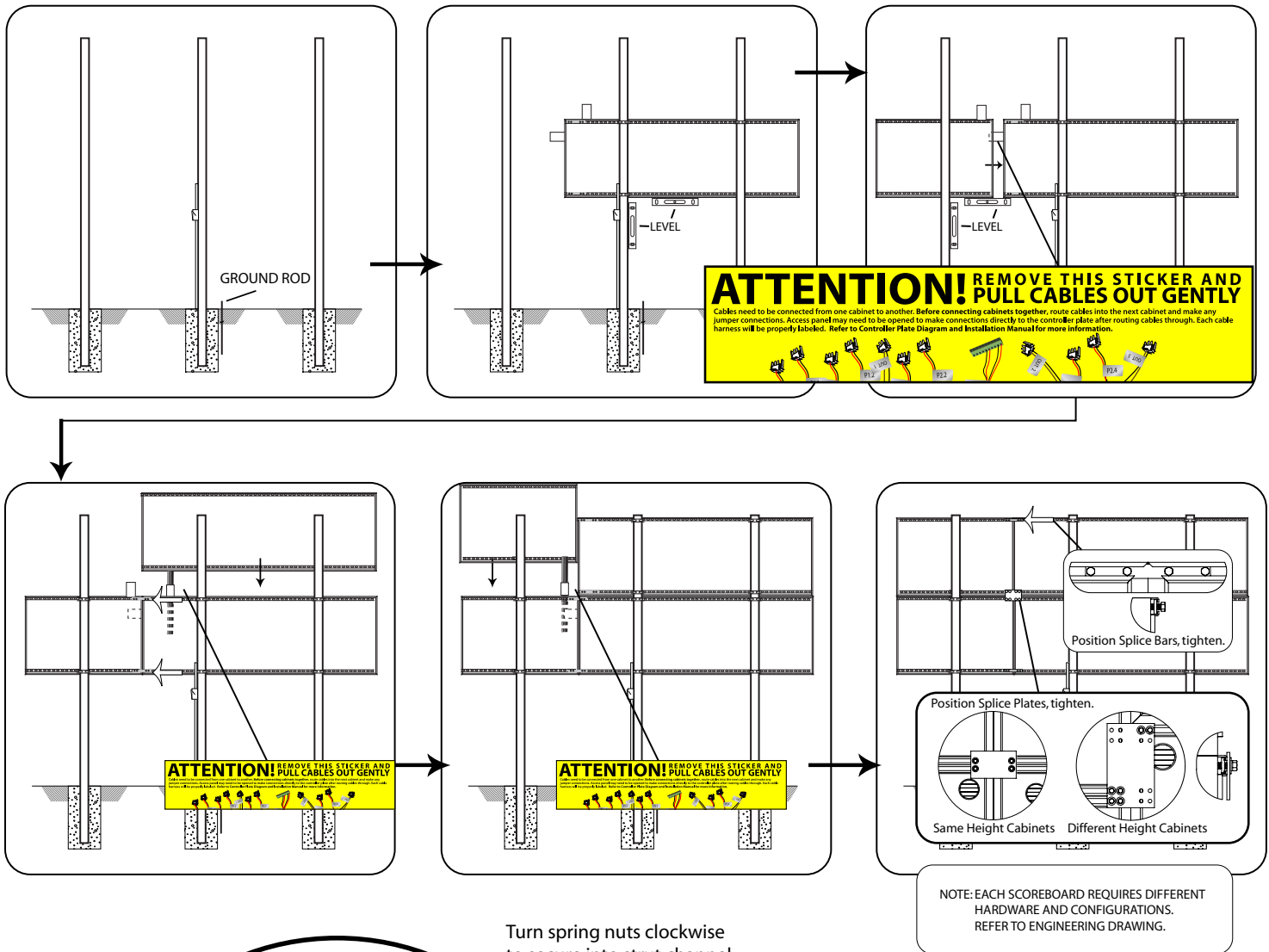
8333LS - 8' high x 26' wide, typically installed on 3 posts.



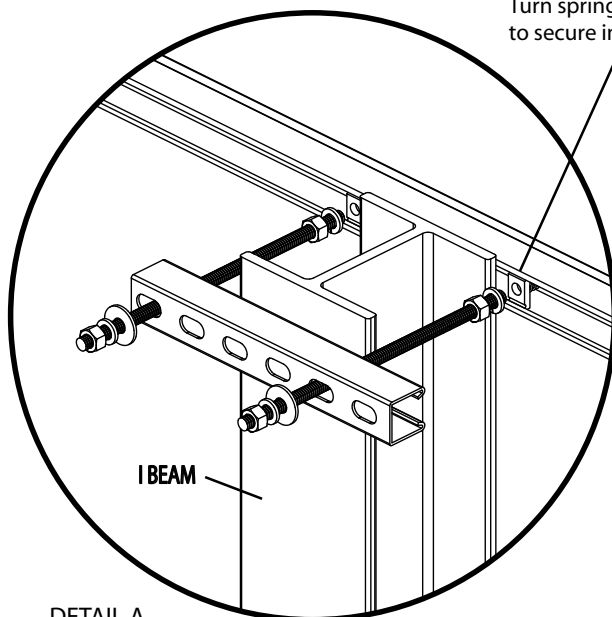
8333LSL - 8' high x 26' wide, typically installed on 3 posts.

Typical Multi-Cabinet Scoreboard Installation Illustration

NUMBER OF POLES SHOWN ONLY FOR REFERENCE. MUST BE DETERMINED LOCALLY BY LICENCED ENGINEER.



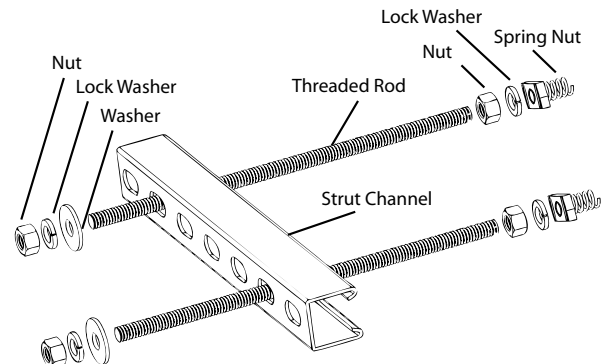
Turn spring nuts clockwise to secure into strut channel.



DETAIL A.
Pressure hold scoreboard cabinets to poles.
Secure with weld.

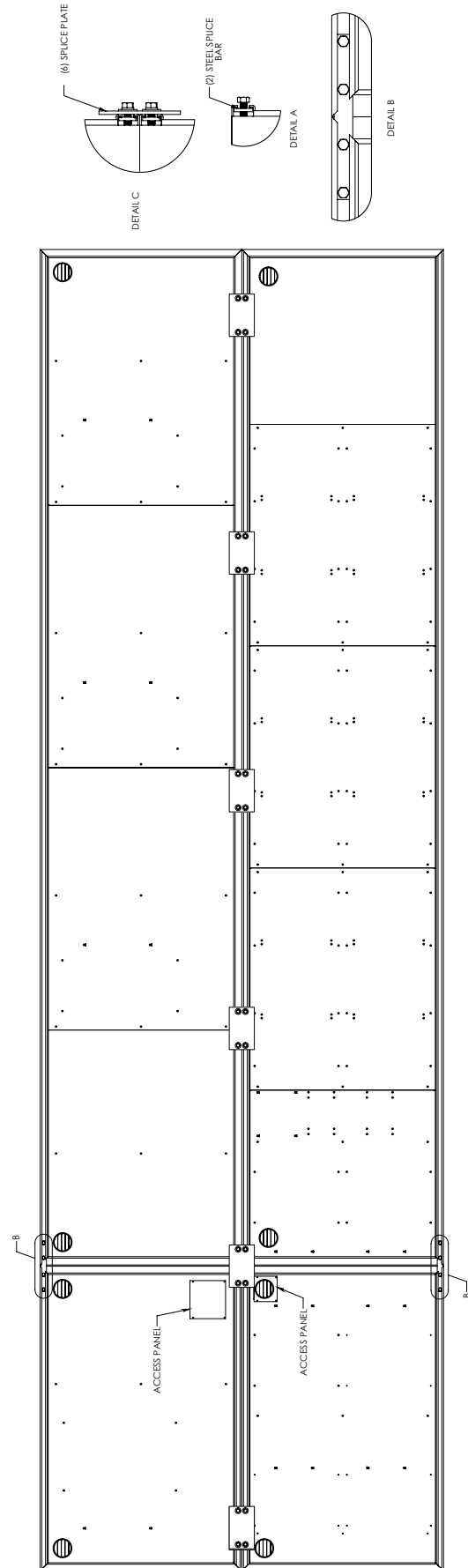
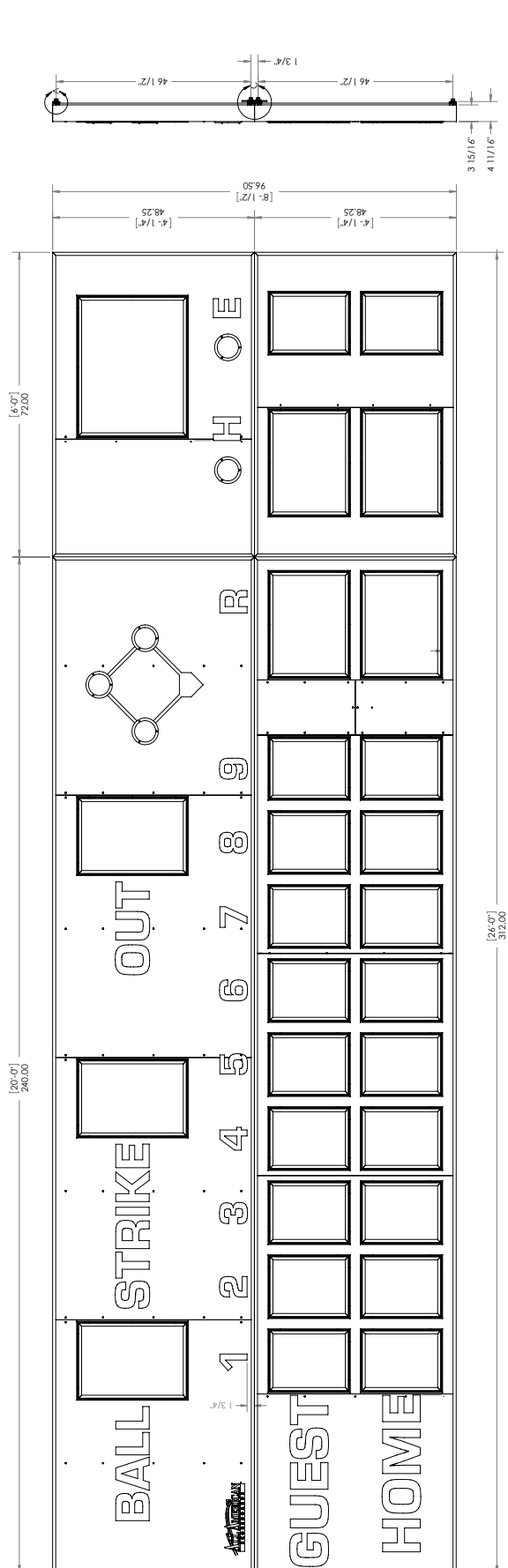
Mounting Kit

Quantity of kits depends on board and number of poles required.
Installed at every point where a pole and a strut channel intersect.
Local ordinances, soil conditions and wind load requirements may require additional structure.



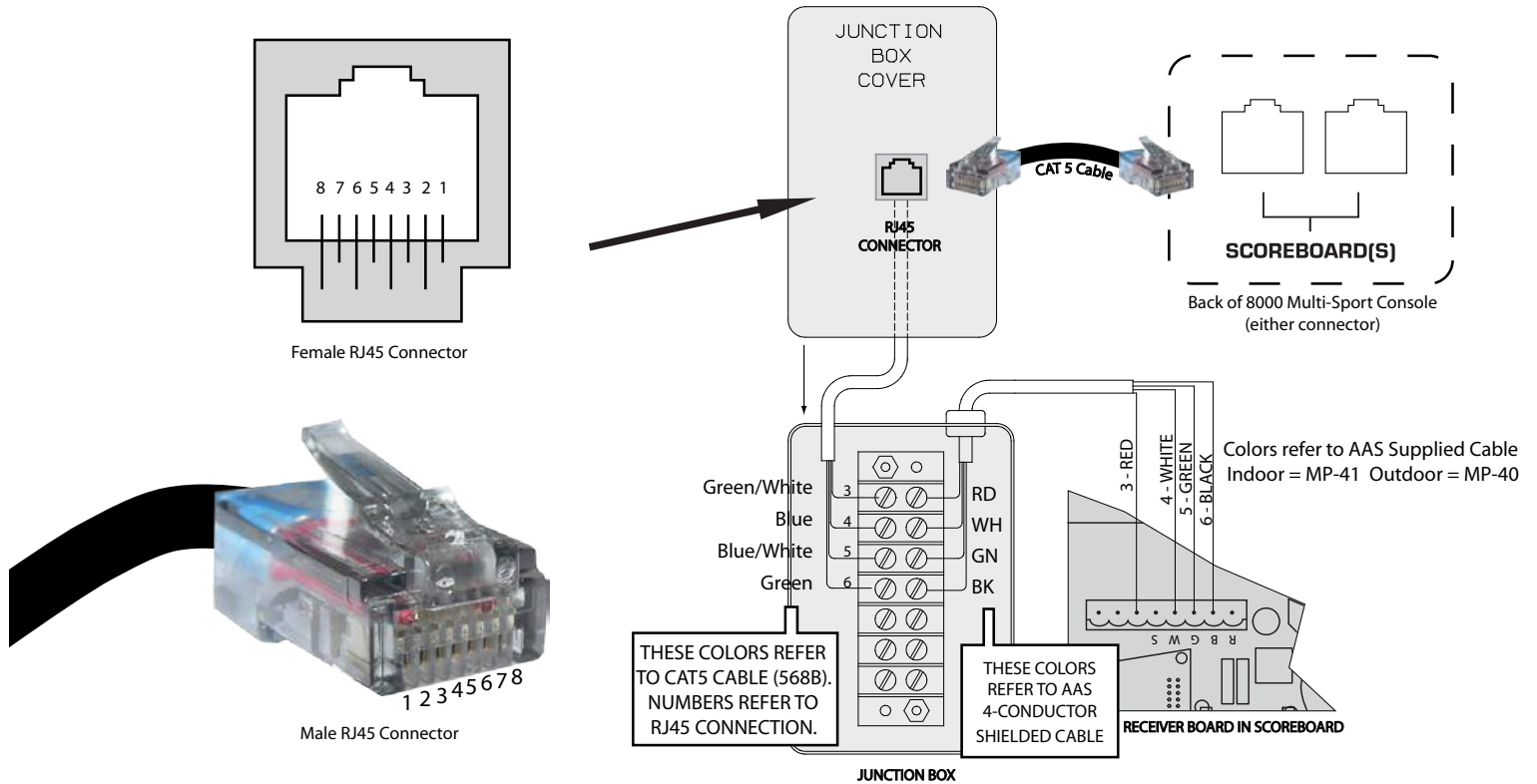
PRODUCT SPECIFICATIONS

MODEL 8333LS LED BASEBALL SCOREBOARD



Hardwire Scoreboard Wiring

With a Standard Junction Box



Wiring a Supplemental Display

With a Single Junction Box

